



E U R O P E A N A L L I A N C E

Workshop 28th of June Marie Skłodowska-Curie Actions calls



Funded by
the European Union

Funded by the European Union. Views and opinions expressed are however those of the author(s) only and do not necessarily reflect those of the European Union or European Union or European Education and Culture Executive Agency (EACEA). Neither the European Union nor the granting authority can be held responsible for them.

Overview

1. Introduction
2. Postdoctoral Fellowships : Individual research projects for postdocs
3. Doctoral Networks : European networks for the training of doctoral students
4. Presentation of successful ITN (former Doctoral Network) **SMARTGYsum** by Enrique Romero
5. Staff Exchanges : European cooperation through the exchange of personnel
6. Matchmaking brainstorming –Workshops for opportunities

The Marie S.-Curie Actions in Horizon Europe

Pillar 1

Excellent Science

European Research Council

Marie Skłodowska-Curie
Actions

Research Infrastructures

Pillar 2

Global Challenges and
European Industrial
Competitiveness

Clusters

- Health
- Culture, Creativity and Inclusive Society
- Civil Security for Society
- Digital, Industry and Space
- Climate, Energy and Mobility
- Food, Bioeconomy, Natural Resources, Agriculture and Environment

Joint Research Centre

Pillar 3

Innovative Europe

European Innovation Council

European innovation
ecosystems

European Institute of
Innovation
and Technology

Widening Participation and Strengthening the European Research Area

Widening participation and spreading excellence

Reforming and Enhancing the European R&I system

MSCA principles

- **3 I : International, intersectorial, interdisciplinary**
- Both innovative **research and training** projects
- Supervision and transferable skills
- Implication of non-academic organizations
- Improve the employability of Early Stage Researcher
- Integration of green practices and methods (MSCA Green Charter)
- Budget in Lump-sum



1. Excellence	2. Impact	3. Implementation
<ul style="list-style-type: none"> - State of the art - Methodology - Interdisciplinary dimension - Open science, gender dimension - Quality of supervision 	<ul style="list-style-type: none"> - Dissemination, exploitation of results, communication activities - Societal, economical, scientific impact - How the project will improve the career of the researchers involved 	<ul style="list-style-type: none"> - Work Plan and Gantt Chart - Capacity of the organization(s) involved in the project
50%	30%	20%

The MSCA Postdoctoral Fellowships

The MSCA Postdoctoral Fellowships

- Bottom-up: all disciplines can apply, no pre-defined topics
- Career development and innovative research training for Postdocs
- Development of researchers' skills - international, interdisciplinary, intersectoral
- Career development: employability in academia and industry as a goal
- Transnational mobility required
- Open to hosts from academic and non-academic sector
- Scientific excellence
- Knowledge transfer to the host institution

Eligibility

- Applicants must be Postdocs: successfully defended doctoral thesis at the call deadline
- Scientific Age: up to 8 years full-time equivalent experience in research after PhD; extensions (e.g. for career breaks, parental leave) possible

- Working conditions: Generally full-time employment contract including social security – no scholarships
- Application: the host institution with the researcher
- Research areas: No pre-defined research topics («bottom-up»)

Secondments :

- Secondment to any country worldwide possible (inter-sectoral preferred)
- Max. 1/3 of the fellowship duration (Global Fellowship only outgoing phase)
- Must be justified in the proposal



Opportunities of secondment between our 9 universities

Postdoctoral Fellowships - Funding

- Funding via unit costs
- Researcher allowances are employer's gross amount
- Living Allowance is multiplied by correction coefficient of the host country (e.g. DE: 98,3 %, ES 91,3%, FR: 116,4%, IT 97,4%, PL 70,5%)
- Family Allowance only for Researcher who are married or have children

Researcher unit contributions [person/month]				Institutional unit contributions [person/month]	
Living allowance	Mobility allowance	Family allowance	Long-term leave allowance	Research, Training and Networking	Management and indirect contributions
5.080 €*	600 €	660 €	5.680 € x % covered by the beneficiary	1.000 €	650 €

2 types of projects

European Fellowships	Global Fellowships
<ul style="list-style-type: none">• Incoming Phase 1-2 years in Europe (MS/AC)	<ul style="list-style-type: none">• Outgoing phase 1-2 years in third country
	<ul style="list-style-type: none">• Mandatory 1 year return phase in Europe

→ Possibility for an additional period of up to six months in an organisation from the non-academic sector established in an EU MS or AC

- 1-2 year research stay in Europe (Memberstate or Horizon Europe Associated Country)
- Additional placement in non-academic sector of max. 6 months
- Eligible: Postdocs of any nationality with up to 8 years experience
- Host institution: must be active in research and development (University, research organisation, company, NGO;...)
- **Mobility rule applies:** researchers must not have resided or carried out their main activity in the country of their host organisation for more than 12 months in the previous 3 years before the call deadline.

- 1-2 year research stay outside Europe + mandatory 1 year return phase in Europe (MS or AC)
- additional placement in non-academic sector possible (MS/AC; max. 6 months)
- Eligible: Postdocs with MS/AC nationality or MS/AC long-term residents (at least five consecutive years; absence: max. 6 consecutive months + 10 months in total) with up to 8 years experience
- 2 Host institutions
- one in Third Country (=associated partner)
- one in MS/AC (=beneficiary, employer also during outgoing phase)
- **Mobility rule** applies for outgoing phase only: Researchers must not have resided or carried out their main activity in the country of their host organisation for more than 12 months in the previous 3 years before the call deadline.

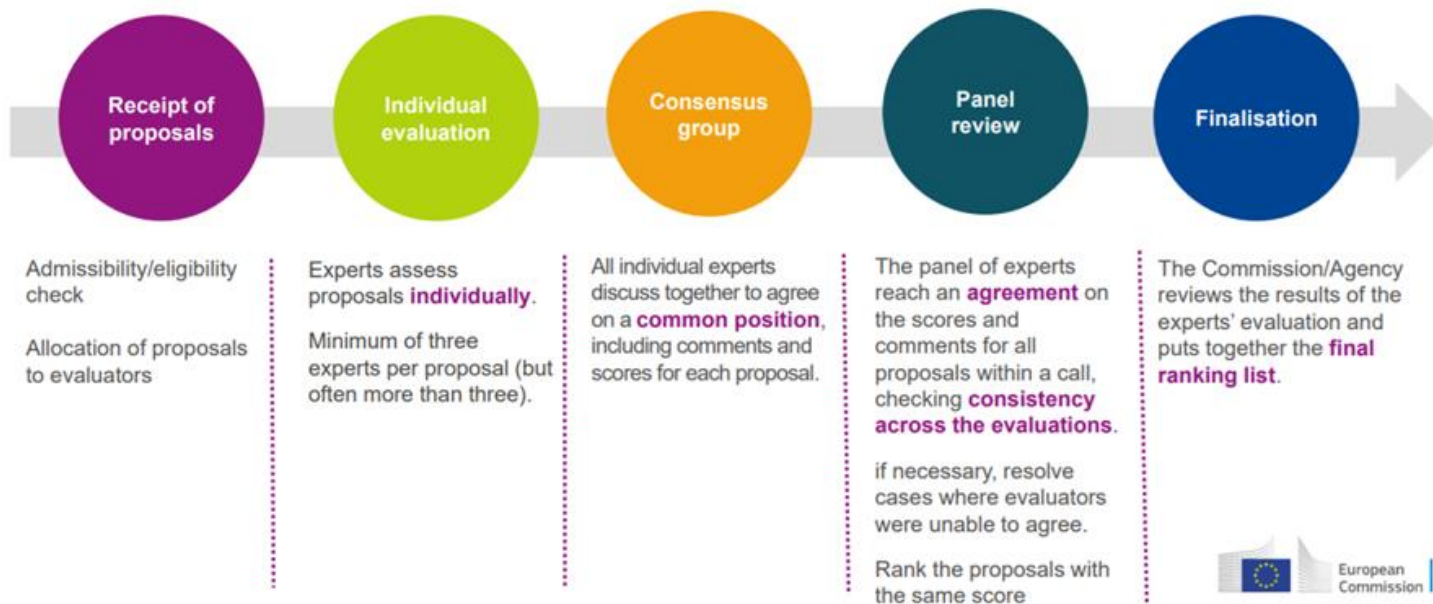
Postdoctoral Fellowships Call 2023

- Open 12.04.2023 – **13.09.2023**
- Budget European Fellowships: 221,40 million €
- Budget Global Fellowships: 39,07 million €
- Application via the [Funding & tender opportunities portal](#)

General tips for the application

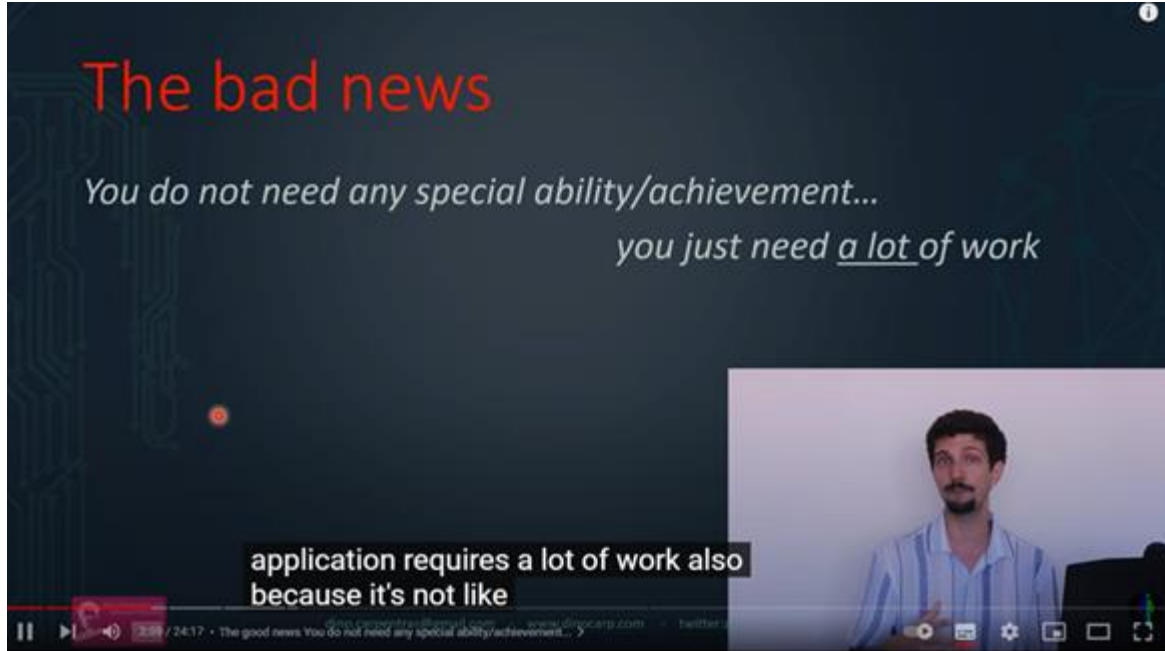
- Use last version of the word-template of the current call
- Follow formatting instructions (spacing, font size [minimum 11 points also for tables], etc.)
- Don't delete tags from template
- Highlight **Buzz-Words**
- Use pictures, diagrammes and/ or tables
- Clear Structure
- Consider funder goals and policy context, demonstrate impact of results on science and on business and industry
- Try to think like a reviewer, check with the guidelines for [evaluation](#)
- Read the [Guide for Applicants](#)

The Evaluation Process



[Evaluation of Marie Skłodowska-Curie Actions \(MSCA\) in Horizon Europe](#)

Experience from a successful applicant



[Video on Youtube:
How to Write a successful Marie Curie application - YouTube](#)

Testimony from a successful applicant University of Angers



Youtube link : <https://youtu.be/QdBmxuhpHH8>

Link to her project : <https://cordis.europa.eu/project/id/101028918>

Objective: Develop transferable skills, in particular doctoral students' potential for creativity, entrepreneurship and innovation, to open up career prospects in both the academic and non-academic worlds.

Implementation: Joint research and doctoral programs, by networking universities, research institutes, companies and other socio-economic players.

International, interdisciplinary and intersectorial collaborations.

Duration of each grant: Minimum: 3 months - Maximum: 36 months. Funding of maximum 15 grants of 36 months.

Next deadlines:

2023 : 28/11/2023

2024 : 27/11/2024

3 types of Doctoral Network

	Regular DN	Joint DN	Industrial DN
Description	Training highly skilled doctoral candidates and stimulating entrepreneurship, creativity, and innovation in Europe and beyond.	delivery of joint, double or multiple doctoral degrees by at least 2 entity	mandatory involvement of the non-academic sector in the doctoral training so that the skills acquired better match public and private sector needs
Max duration of fellowship / PhD student	36 months	48 months	36 months
Duration of project max	48 months	60 months	48 months
Duration of secondments	up to 1/3	no limit	no limit

Contributions for recruited researchers Per person-month					Institutional unit contributions Per person-month	
Living allowance	Mobility allowance	Family allowance (if applicable)	Long-term leave allowance (if applicable)	Special needs allowance (if applicable)	Research, training and networking contribution	Management and indirect contribution
EUR 3 400	EUR 600	EUR 660	EUR 4 000 x % covered by the beneficiary	Requested unit ¹ x (1/number of months)	EUR 1 600	EUR 1 200

**SMARTGYsum : Research and Training Network for
Smart and Green Energy Systems and Business Models
2021-2025 €3 785 704,56**

Consortium of 14 participants

<https://cordis.europa.eu/project/id/955614>

MSCA Staff Exchanges

Objective : Promote international, cross-sectoral and interdisciplinary collaboration through staff exchanges (research staff or administrative and technique staff) as part of a joint R&I project:

Secondment(s) of 1 to 12 months per staff member

o Between 2 different countries (international)

o If between two Member States or countries associated with Horizon Europe : intersectoral or interdisciplinary

Maximum 360 months per project

Eligibility to apply?

The coordinator of a Consortium of at least 3 independent legal entities established in 3 different countries, 2 of which must be based in an EU Member State or country associated with Horizon Europe.

If all participants are from the same sector, at least one organization from a third country not associated with HE must be included. Beyond that, the participation of organizations from any country is possible.

Next deadlines:

2023 : 28/02/2024

2024 : 05/03/2025

Which staff member ?

- Researchers at all career stages (PhD students, postdocs, etc.)
- Administrative, managerial and technical staff supporting R&I activities within the framework of the action.
- Must have been engaged in or linked to R&I activities for at least 1 month (full-time equivalent) at the home organization before the first secondment period.
- After the secondment period, staff must return to their home organization in order to maximize the impact of the action (knowledge exchange and collaboration).

Duration of secondments: 1 to 12 months for the same staff member

- The secondment of the same staff member may be divided into several stays with one or more beneficiaries or associated partners.
- Secondments must be between different countries
- Secondments between EU Member States or countries associated with HE must be in different sectors, with the exception of interdisciplinary secondments.



Opportunities of secondment between our 9 universities

Contributions for seconded staff members Per person-month		Institutional unit contributions Per person-month	
Top-up allowance	Special needs allowance (if applicable)	Research, training and networking contribution	Management and indirect contribution
EUR 2 300	Requested unit ¹ x (1/number of months)	EUR 1 300	EUR 1 000

How to participate to MSCA projects as EU Green participants ?

Example of collaborations between EU Green researchers in MSCA since January 2023

Tools already implemented For EU Green WP3

1. [MSCA Matchmaking table for Postdoctoral Fellowship](#)
2. [Matchmaking table for collaborative projects](#)
3. [Template to present your project](#)

WELCOME TO THE MSCA@UNIPR BOOTCAMP 2023

For the first time at the University of Parma, we are going to provide **3-day intensive high-quality training** for international post-doctoral researchers who commit to applying for a Horizon Europe Marie Skłodowska-Curie Postdoctoral Fellowships Call, choosing UNIPR as their Host Organisation.

The MSCA Postdoctoral Fellowships targets **researchers holding a PhD** who wish to carry out their research activities abroad and acquire new skills to develop their careers and foster excellence in research.

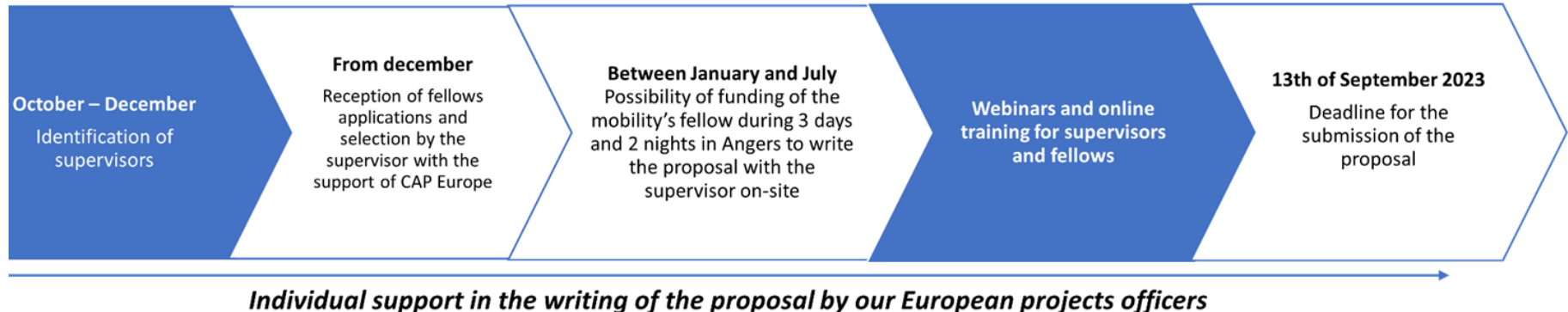
The MSCA Bootcamp is a 3-day intensive workshop that will take place at **UNIPR from 5th to 7th June 2023**. Experts in project writing and evaluation will teach you how to develop excellent and innovative project proposals.

Selected candidates will receive **one-month fellowship or reimbursement fee up to 1.000,00 €**

Example of incentive action from Université d'Angers

Springboard toward MSCA Postdoctoral Fellowship :

- identifying an international candidate for each supervisor (via Euraxess, MSCAB2matchmaking)
- **Training** for supervisors and candidates via information webinars (in English and French) and online training.
- **Funding of 2 days' mobility** for the postdoctoral student to meet his or her supervisor in Angers and devote himself or herself to writing the project.



- [MSCA Work Programme](#)
- [MSCA Guidelines on supervision](#)
- [MSCA website](#)
- [MSCA Green Charter](#)



Funded by the European Union. Views and opinions expressed are however those of the author(s) only and do not necessarily reflect those of the European Union or European Union or European Education and Culture Executive Agency (EACEA). Neither the European Union nor the granting authority can be held responsible for them.